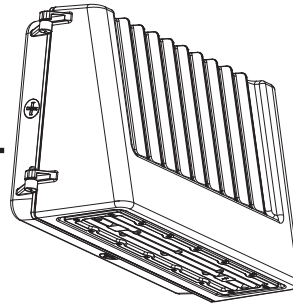


WPT™ UX Series

LED Wall Pack

Includes: WPT-80UX/CT

aleo™
LED LIGHTING



INSTALLATION INSTRUCTIONS

READ AND FOLLOW ALL SAFETY INSTRUCTIONS

WARNING

FAILURE TO FOLLOW THESE INSTRUCTIONS AND WARNINGS MAY RESULT IN SERIOUS INJURY OR DAMAGE TO PROPERTY

For your safety, thoroughly read these instructions and warnings in its entirety prior to installing or servicing this product. These instructions do not attempt to cover all installation and maintenance circumstances. If you do not understand these instructions or if additional information is needed, please contact Aleo Lighting customer service.

WARNING

RISK OF FIRE OR ELECTRIC SHOCK

This product must be installed and serviced by a professional electrician in accordance with applicable federal, state, and local laws, regulations, and electrical code. If not qualified, do not attempt installation of this product. Contact a qualified electrician.

WARNING

RISK OF FIRE, ELECTRIC SHOCK, or PERSONAL INJURY

To avoid risk of electrical shock, turn off power before installing or servicing.

Verify that supply voltage is correct by comparing with the input voltage on the luminaire label

Make all electrical and ground connections in accordance with NEC and any applicable code requirements

WARNING

RISK OF PERSONAL INJURY

To prevent wiring damage or abrasion, do not expose wiring to edges of sheet metal or other sharp objects
Do not make or alter any open holes in any of the enclosures with wiring or electrical components during installation

SAVE THESE INSTRUCTIONS FOR FUTURE REFERENCE

WARNING

This luminaire is made for permanent installation in ordinary (non-hazardous) locations in accordance with NEC code and all applicable local and federal codes. Do not use in applications with limited ventilation or high ambient temperature enclosures.

TURN OFF POWER BEFORE INSTALLING

Electrical Connection

1. Connect BLACK (line) driver lead to voltage supply Line position (HOT).
2. Connect driver WHITE lead to the NEUTRAL supply position.
3. Connect the GREEN ground lead to the supply ground lead.

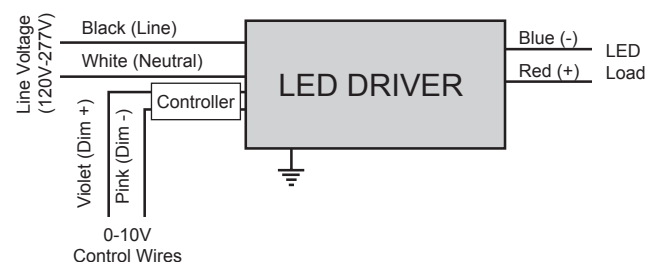
If using 0-10V dimming:

4. Connect VIOLET lead to supply POSITIVE dimming lead.
5. Connect PINK lead to the supply NEGATIVE dimming lead.

If NOT using 0-10V dimming:

6. Ensure VIOLET and PINK 0-10V dimming leads are properly capped.

Wiring Diagram



WPT™ UX Series

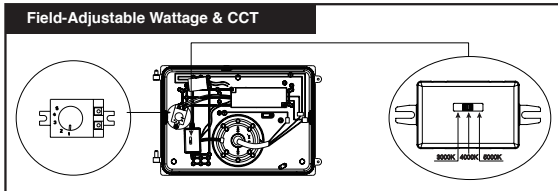
LED Wall Pack

TO INSTALL:

This product SHALL be surface mounted with recessed junction box above 4 feet (1.2 meter) high.

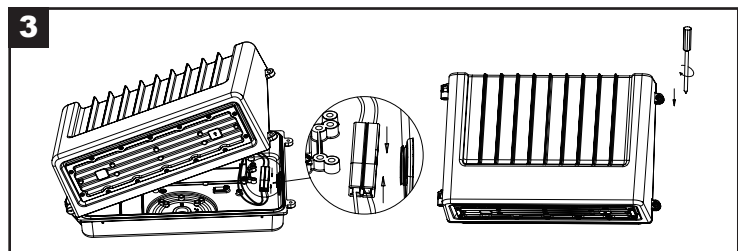
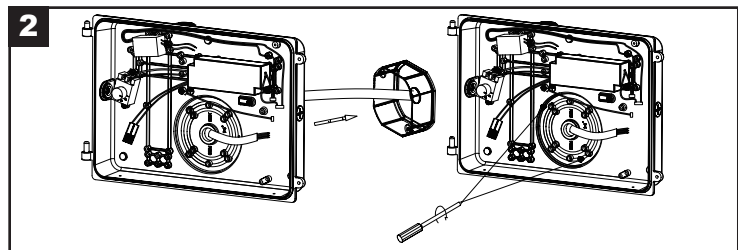
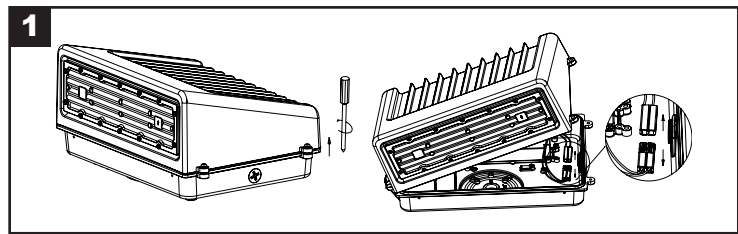
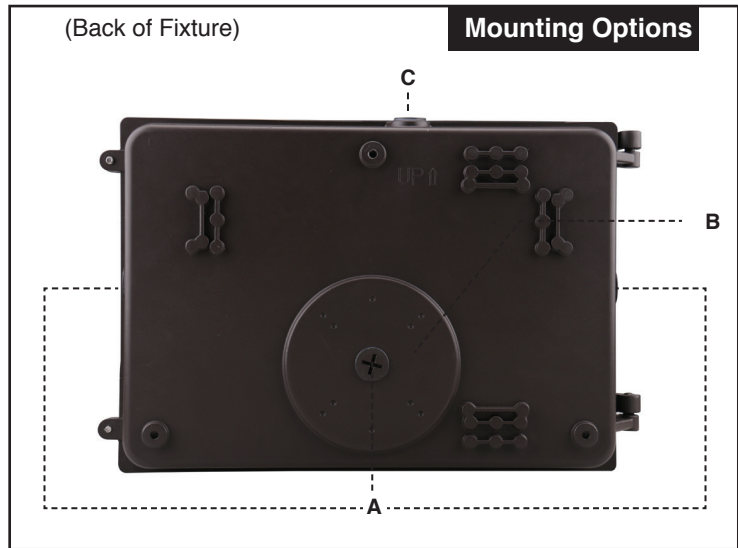
User should prepare necessary accessories and spare parts (not provided) including junction box, cross bar, junction box gasket, surface plate and screws.

- A: Coin Plug for Conduit Entry
- B: Octagonal Junction Box Holes
- C: Built-in Photocell



NOTE: This fixture is intended for use with conduit connectors, conduit, and junction box that are UL listed suitable for wet locations and are properly installed and grounded.

1. Open the fixture by unscrewing the (2) screws
2. Disconnect LED Driver from LED modules by disconnecting connector. NOTE: when opening the rear housing, please pay special attention NOT to damage the spindle and inner wires.
3. Select and unscrew coin plug (A) or drill holes through casting in the rear housing for mounting fixture to wall and to secure to junction box (not provided).
4. Apply silicon sealant (not provided) to any holes to prevent water entry.
5. Secure fixture to junction box or wall with screws (not provided) (B). Junction box gasket should create seal against mounting surface.
6. Make all electrical connections to the fixture. SEE PAGE 1 for Electrical Connection and wiring diagram instructions.
7. The fixture comes with an adjustable CCT switch. Move switch to select the desired CCT.
8. Fixture comes equipped with a built-in photocell attached to the side coin hole. To disable the photocell, disconnect the connector from the photocell.
9. Re-mount door to rear housing. Re-connect the LED driver to LED modules using quick connector.
10. Swing lens door and screw two screws to tighten and close the fixture. Make sure all gaskets are seated properly and all bolts and screws inserted and tightened firmly.



aleo™
LED LIGHTING

Aleo Lighting, Inc.
www.aleolighting.com
10988 Bloomfield Ave.
Santa Fe Springs, CA 90670
Ph: 877-358-8825

© 2021 Aleo Lighting, Inc. All rights reserved. For informational purposes only. Reproduction in whole or part is prohibited without prior written consent of the copyright owner. The information presented in this document does not form part of any quotation or contract, is believed to be accurate and reliable and may be changed without notice. No liability will be accepted by the publisher for any consequences of its use.