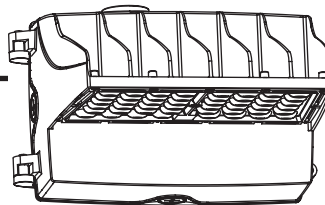


# WPL UX™ Series

## LED Wall Pack

Includes: WPL-40UX, WPL-100UX

**aleo™**  
LED LIGHTING



## INSTALLATION INSTRUCTIONS

### READ AND FOLLOW ALL SAFETY INSTRUCTIONS

#### WARNING

**FAILURE TO FOLLOW THESE INSTRUCTIONS AND WARNINGS MAY RESULT IN SERIOUS INJURY OR DAMAGE TO PROPERTY**

For your safety, thoroughly read these instructions and warnings in its entirety prior to installing or servicing this product. These instructions do not attempt to cover all installation and maintenance circumstances. If you do not understand these instructions or if additional information is needed, please contact Aleo Lighting customer service.

#### WARNING

##### RISK OF FIRE OR ELECTRIC SHOCK

This product must be installed and serviced by a professional electrician in accordance with applicable federal, state, and local laws, regulations, and electrical code. If not qualified, do not attempt installation of this product. Contact a qualified electrician.

#### WARNING

##### RISK OF FIRE, ELECTRIC SHOCK, or PERSONAL INJURY

To avoid risk of electrical shock, turn off power before installing or servicing.

Verify that supply voltage is correct by comparing with the input voltage on the luminaire label

Make all electrical and ground connections in accordance with NEC and any applicable code requirements

#### WARNING

##### RISK OF PERSONAL INJURY

To prevent wiring damage or abrasion, do not expose wiring to edges of sheet metal or other sharp objects

Do not make or alter any open holes in any of the enclosures with wiring or electrical components during installation

### SAVE THESE INSTRUCTIONS FOR FUTURE REFERENCE

SUITABLE FOR WET LOCATION

#### WARNING

This luminaire is made for permanent installation in ordinary (non-hazardous) locations in accordance with NEC code and all applicable local and federal codes. Do not use in applications with limited ventilation or high ambient temperature enclosures.

This luminaire is intended to be installed with the optics / LED facing downwards towards the ground.

DO NOT install upside down with the optics facing the sky.

### TURN OFF POWER BEFORE INSTALLING

#### Electrical Connection

1. Connect BLACK (line) driver lead to voltage supply Line position (HOT).
2. Connect driver WHITE lead to the NEUTRAL supply position.
3. Connect the GREEN ground lead to the supply ground lead.

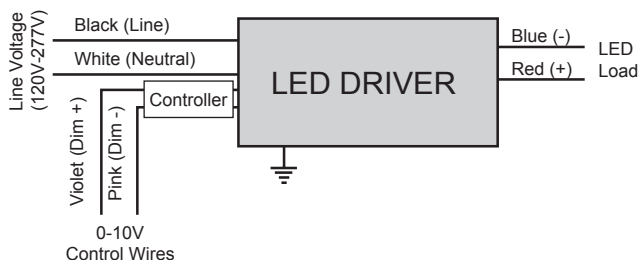
#### If using 0-10V dimming:

4. Connect VIOLET lead to supply POSITIVE dimming lead.
5. Connect PINK lead to the supply NEGATIVE dimming lead.

#### If NOT using 0-10V dimming:

6. Ensure VIOLET and PINK 0-10V dimming leads are properly capped.

#### Wiring Diagram



### TO INSTALL:

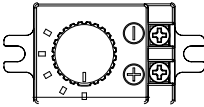
This product SHALL be surface mounted with recessed junction box above 4 feet (1.2 meter) high.

User should prepare necessary accessories and spare parts (not provided) including junction box, cross bar, junction box gasket, surface plate and screws.

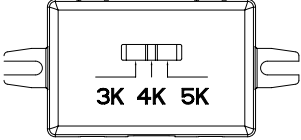
NOTE: This fixture is intended for use with conduit connectors, conduit, and junction box that are UL listed suitable for wet locations and are properly installed and grounded.

**Field-Adjustable Wattage & CCT**

**Located inside the fixture housing**



Wattage Select Dial



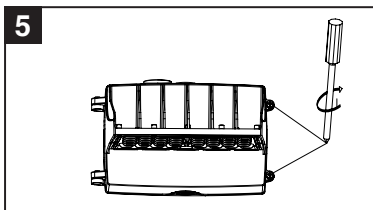
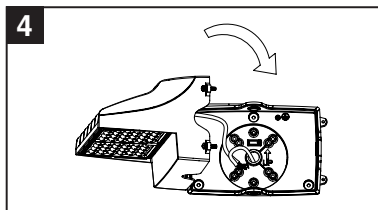
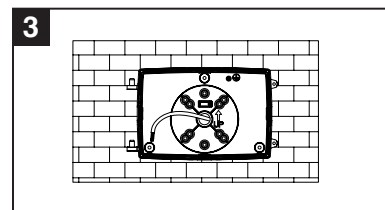
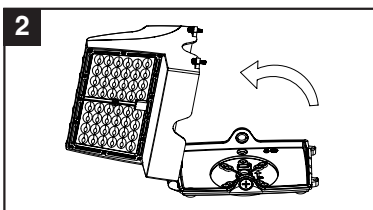
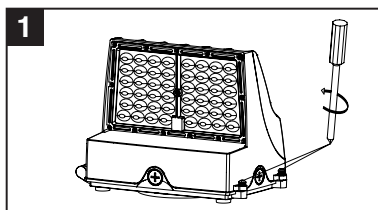
CCT Select Switch

**WARNING: Turn Off power before adjusting Wattage or CCT**

To disable the built-in photocell, disconnect the photocell from the LED driver.

### A JUNCTION BOX INSTALLATION

1. Loosen screws on the right side of the fixture. Disconnect the quick connector (between LED module and LED driver) inside the fixture and take off the front housing (**Figure 1 and 2**).
2. Remove the knockout on the back of the housing, mount the housing and secure it onto the junction box inside the wall (**Figure 3**). Junction box gasket should create seal against wall surface. On uneven surfaces, you may use silicon sealant (not provided) to ensure tight seal against surface.
3. Connect supply leads. Refer to WIRING DIAGRAM on Pg. 1 for more details.
4. Mount the front of the housing back on the back housing. Re-connect the quick connector (**Figure 4**).
5. Screw two bolts to tighten and close the fixture (**Figure 5**). Make sure all gaskets are seated properly and all bolts and screws inserted and tightened firmly. Use silicone sealant (not provided) all along the bottom of the fixture to ensure tight seal against surface.



INSTALLER IS RESPONSIBLE FOR ENSURING PROPER FIXTURE ATTACHMENT AND WEATHER PROOFING, INCLUDING SEALING AND GASKETING OF CONNECTION TO PREVENT WATER INTRUSION.

### TO INSTALL:

---

#### **B** SURFACE MOUNT WITH CONDUIT FEED INSTALLATION

1. Loosen screws on the right side of the fixture to open the fixture. Disconnect the quick connector (between LED module and LED driver) inside the fixture and take off the front housing (**Figure 1 and 2**).
2. Remove the 1/2" plug from the side of the fixture, and feed the conduit into the back housing through the knockout.
3. Mount the back of the housing onto the wall (**Figure 3**). Gasket on back housing should create seal against wall surface. On uneven surfaces, you may use silicon sealant (not provided) to ensure tight seal against surface.
4. Make supply wiring connection. Refer to WIRING DIAGRAM on Pg. 1 for more details.
5. Mount the front of the housing to the back of the housing. Re-connect the quick connector (**Figure 4**).
6. Secure the two bolts to tighten and close the fixture (**Figure 5**). Make sure all gaskets seated properly and all bolts and screws inserted and tightened firmly. Use silicone sealant (not provided) all along the bottom of the fixture to ensure tight seal against surface.

INSTALLER IS RESPONSIBLE FOR ENSURING PROPER FIXTURE ATTACHMENT AND WEATHER PROOFING, INCLUDING SEALING AND GASKETING OF CONNECTION TO PREVENT WATER INTRUSION.

**aleo**™  
LED LIGHTING

Aleo Lighting, Inc.  
www.aleolighting.com  
10988 Bloomfield Ave.  
Santa Fe Springs, CA 90670  
Ph: 877-358-8825