



Project	
Notes	
Type	Date
Cat. No.	

STL™ UX Series

LED Stairwell Strip Luminaire - CCT Select



DESCRIPTION

The Aleo STL™ UX Series CCT Field Adjustable Stairwell Strip Luminaire delivers high performance with deep energy savings. The LED luminaire comes equipped with a multi-level occupancy sensor enhancing safety and security in stairwells, hallways and corridors.

APPLICATIONS

Stairwell, Hallways, Corridors, Closets, Pathways



Specification Features

Construction

Integral LED gear tray and reflector with driver on board allows for easy installation and handling. Luminaire features matte white durable finish. Diffuser requires no additional frame or fastener for easy installation.

Installation / Mounting

Ideal for wall or ceiling surface mount. Mounts via keyholes or directly to J-Box.

Optical System

Reflector systems features highly reflective coating and delivers balanced, comfortable luminance for productive spaces. Diffuser lens reduces glare and improves occupant comfort while maintaining high efficiency emission.

Certification

UL Listed. All components have UL certification. UL Class 2. Driver: SCP, OTP, OVP protection, FCC Part 15 Class B, UL8750 Class 2. DLC Premium QPL.

Warranty

7-year Limited Warranty. See warranty documentation for more information.

Electrical

Luminaire utilizes high-efficacy LED packages maintained at cool temperatures for long life, high efficacy. Reliable driver features continuous dimming. Universal voltage (120-277V) for convenient installation. Comes equipped with luminaire quick-disconnect.

Installation / Mounting

Ideal for wall or ceiling surface mount. Mounts via keyholes or directly to J-Box.

Controls / Dimming

0-10V dimming comes standard. Comes equipped with High Frequency (microwave) multi-level occupancy sensor for a bi-level (high/low) system.

Field-Adjustable CCT

Increased versatility and reduced inventory burden. Color Temp. can be adjusted in the field by selecting (3) different CCTs via switch on driver box

STL Series

4' 25W / 34W / 40W

Rated Life 75,000 hours
Limited Warranty 7-years
Efficacy Up to 120 LPW
Continuous Dimming



Quick Ship

STL-4UXH/8CT XE G4-OSDL/HF (XX)

Ordering Information

Example: STL-4UXH/8CT XE G4-OSDL/HF (XX)

STL	4	UXH	8	CT	[OSDL/HF]	(XX)
Series STL LED Stairwell Strip Luminaire	Form Factor 4 4'	Lumen Package UXH Factory Set	CRI 8 83+	Color Temp* CT Field Adjust. 3500K 4000K 5000K <small>* Utilize 3-way switch to select</small>	Controls OSDL / HF High Frequency Multi-Level Occ. Sensor	Nom. Wattage** XX 25W 34W 40W <small>** Wattage Factory Set</small>

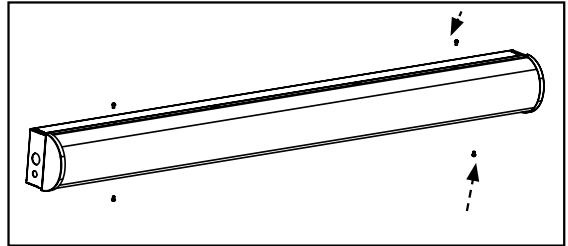
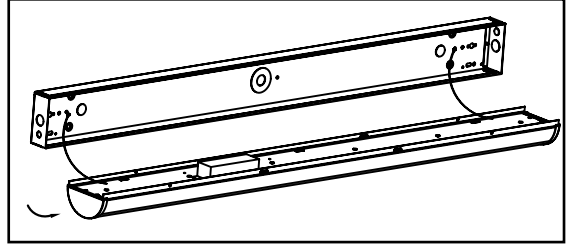
Options	
Emergency Backup EM1800 1800lm EMLC/DR Emergency Lighting Control Dimming Relay	Designation BAA Buy American Act Compliant BABAA Build America, Buy America Act Compliant

Specifications and Dimensions subject to change without notice.

Performance Summary

Input Voltage	120V-277V
Input Frequency	50/60 Hz
Rated Wattage	See Performance Table
Delivered Lumens	See Performance Table
Efficacy	> 120 LPW (typ.)
CRI	80+
Available CCT	3500K, 4000K, 5000K
Color Consistency ²	5-step MacAdam Ellipse
Rated Life	75,000 hours
L70 ³	54,000 hours
Power Factor	> 0.9
THD	< 20%
Dimming	0-10V Continuous (10-100%)
Operating Temp.	-20°C to 50°C
Occupancy Sensor Type	High Frequency (Microwave), Multi-Level

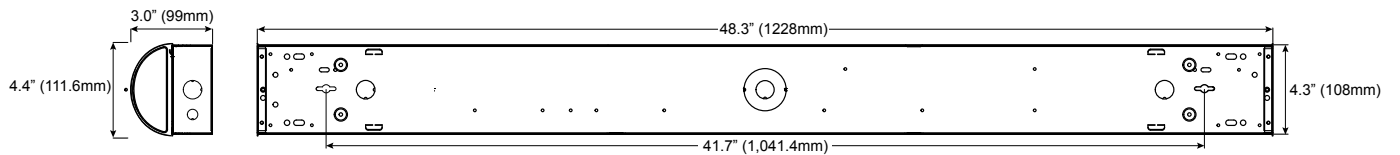
Mounting Information



Performance Data

Form Factor	Catalog No.	Rated Wattage (W)	3500K		4000K		5000K	
			Delivered Lumens (lm)	Efficacy (lm/W)	Delivered Lumens (lm)	Efficacy (lm/W)	Delivered Lumens (lm)	Efficacy (lm/W)
4'	STL-4UXH/8CT XE G4-OSDL/HF (XX)	25	3475	139	3850	154	3575	143
		34	4590	135	5100	150	4726	139
		40	5280	132	5880	147	5440	136

Product Dimensions

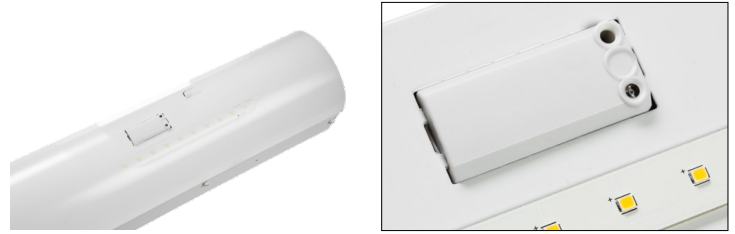


Specifications and Dimensions subject to change without notice.

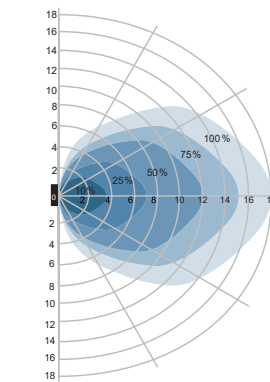
Sensor Information

Specifications

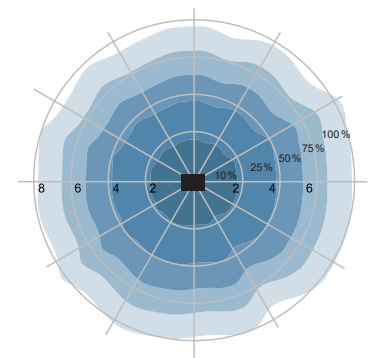
Operating Voltage	120-277Vac, 50/60Hz
Rated load	400W @ 120Vac, 800W @ 220-277Vac(inductive)
HF system	5.8GHz±75MHz, ISM wave band
Power Consumption	<0.5mW (standby)
Detection Zone	19.7ft (@9.8ft mounting height)
Detection Sensitivity	25%/50%/75%/100%
Hold Time	5s/30s/90s/3min/20min/+∞
Daylight Sensor	5lux / 15lux / 30lux / 50lux / 100lux 150lux / Disable
Stand-by Period	0s/5s/5mins/10mins/30min/1h/+∞
Stand-by Dimming	10%/20%/30%/50%
Mounting Height	20 ft Max.
Motion Detection	1.6~9.8ft/s
Detection Angle	150°(wall installation) 360°(ceiling installation)
Operating Temperature	-35°C - 70°C



Detection Pattern



Wall Mounting Pattern (Unit:m)



CeilingMounting Pattern (Unit:m)

Sensor Settings

	1	2	
I	ON	ON	100%
II	ON	-	75%
III	-	ON	50%
IV	-	-	25%

Detection Area

Detection area can be reduced by selecting the combination on the DIP switch to fit precisely each application.

	1	2	
I	ON	ON	50%
II	-	ON	30%
III	ON	-	20%
IV	-	-	10%

Stand-by dimming level

The low light level you would like to have after the hold time in the long absence.

	3	4	5	
I	ON	ON	ON	5S
II	-	ON	ON	30S
III	ON	-	ON	90S
IV	-	-	ON	3min
V	ON	ON	-	20min
VI	-	-	-	+∞

Hold time

Refers to the time period the lamp remains at 100% illumination after no motion detected.

	3	4	5	6	
I	ON	ON	ON	ON	5lux
II	-	ON	ON	ON	15lux
III	ON	-	ON	ON	30lux
IV	-	-	ON	ON	50Lux
V	ON	ON	-	ON	100Lux
VI	ON	ON	ON	-	150Lux
VII	-	-	-	-	Disable

Daylight sensor

The sensor can be set to only allow the lamp to illuminate below a defined ambient brightness threshold. When set to Disable mode, the daylight sensor will switch on the lamp when motion is detected of ambient light level. 100lux, 100lux, 50lux: twilight operation, 10lux, 5lux: darkener operation only.

	6	7	8	
I	ON	ON	ON	0S
II	-	ON	ON	5S
III	ON	-	ON	5min
IV	-	-	ON	10min
V	-	ON	-	30min
VI	-	ON	-	1H
VII	-	-	-	+∞

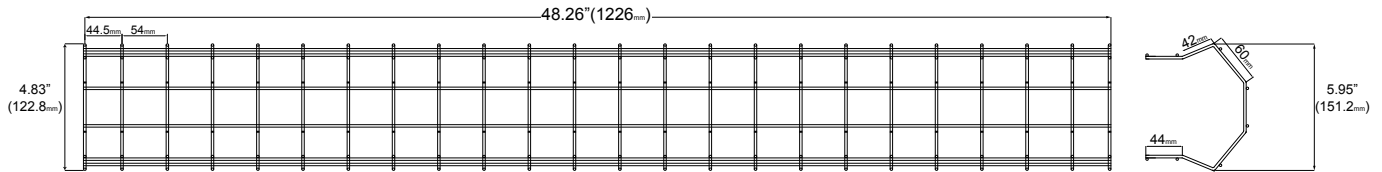
Stand-by period

Refers to the time the lamp remains at a low light level before it completely switches off in the long absence of people. When set to Disable mode, the low light is maintained until motion is detected.

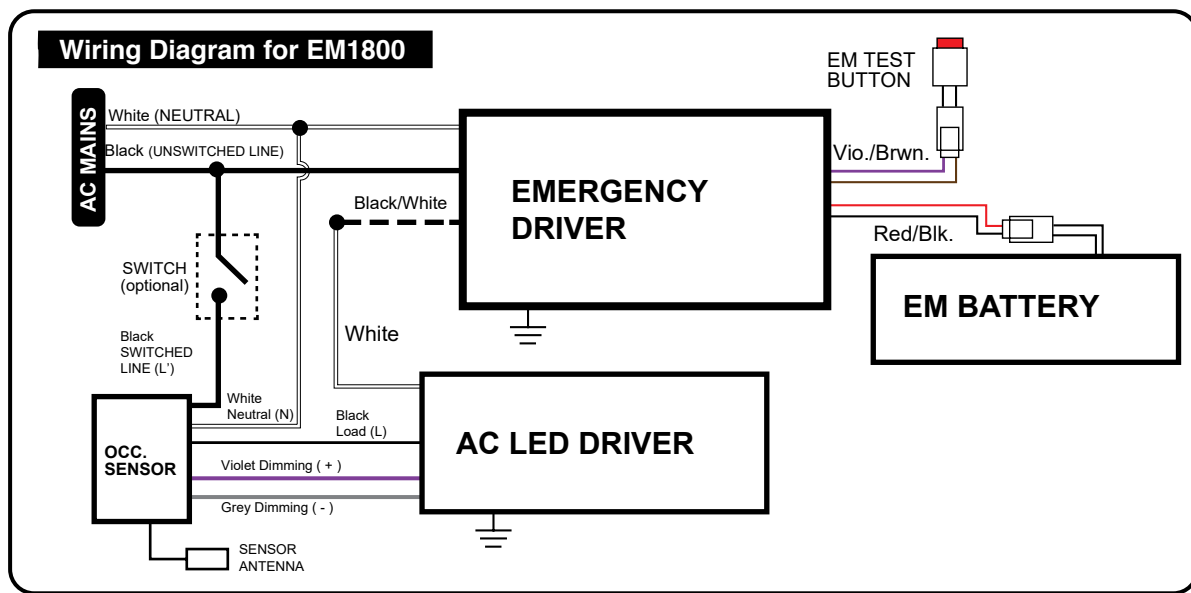
Note that daylight sensor is active only when lamp totally switches off

Accessory Options

Wire Guard Dimensions



Emergency Backup EM1800



Accessory Options

EMLC/DR - Emergency Lighting Control Dimming Relay (EMLC/DR)

Allows full brightness operation of the luminaire from the generator or inverter, regardless of local controls/sensor settings. Senses the loss of normal AC power and bypasses the local switch device or dimmed setting, allowing emergency power directly to the fixture.

