



## STL™ Series

LED Stairwell Strip Luminaire - CCT Select

### DESCRIPTION

The Aleo STL™ UX Series CCT Field Adjustable Stairwell Strip Luminaire delivers high performance with deep energy savings. The LED luminaire comes equipped with a multi-level occupancy sensor enhancing safety and security in stairwells, hallways and corridors.

### APPLICATIONS

Stairwell, Hallways, Corridors, Closets, Pathways.

#### STL™ SERIES

4' 25W / 34W / 40W

#### QUICK SHIP

STL-4UXH/8CT XE G4-OSDL/HF (DC)

### SPECIFICATION FEATURES

#### • CONSTRUCTION

Integral LED gear tray and reflector with driver on board allows for easy installation and handling. Luminaire features matte white durable finish. Diffuser requires no additional frame or fastener for easy installation.

#### • OPTICAL SYSTEM

Reflector systems features highly reflective coating and delivers balanced, comfortable luminance for productive spaces. Diffuser lens reduces glare and improves occupant comfort while maintaining high efficiency emission.

#### • CERTIFICATION

UL Listed. All components have UL certification. UL Class 2. Driver: SCP, OTP, OVP protection, FCC Part 15 Class B, UL8750 Class 2. DLC Premium QPL.

#### • ELECTRICAL

Luminaire utilizes high-efficacy LED packages maintained at cool temperatures for long life, high efficacy. Reliable driver features continuous dimming. Universal voltage (120-277V) for convenient installation. Comes equipped with luminaire quick-disconnect.

#### • INSTALLATION / MOUNTING

Ideal for wall or ceiling surface mount. Mounts via keyholes or directly to J-Box.

#### • CONTROLS / DIMMING

0-10V dimming comes standard. Comes equipped with High Frequency (microwave) multi-level occupancy sensor for a bi-level (high/low) system.

#### • FIELD ADJUSTABLE CCT

Increased versatility and reduced inventory burden. Color Temp. can be adjusted in the field by selecting (3) different CCTs via switch on driver box different CCTs via switch on driver.

#### • WARRANTY

7-year Limited Warranty. See warranty documentation for more information.

### ORDERING INFORMATION

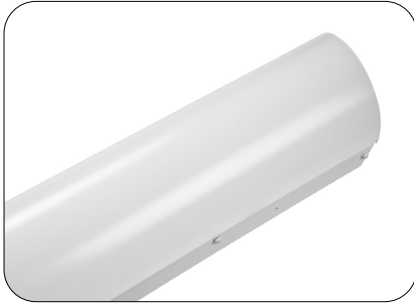
EXAMPLE: STL-4UXH/8CT XE G4-OSDL/HF (XX)

STL	4	UXH	8	CT	[OSDL/HF]	(DC)
Series	Form Factor	Lumen Package	CRI	Color Temp	Controls	DC
STL LED Stairwell Strip Luminaire	4 - 4'	UXH Factory Set	8 83+	CT Field Adjust. 3500K 4000K 5000K  *Utilize 3-way switch to select	OSDL / HF High Frequency Multi-Level Occ. Sensor	Low Voltage 12V-24V

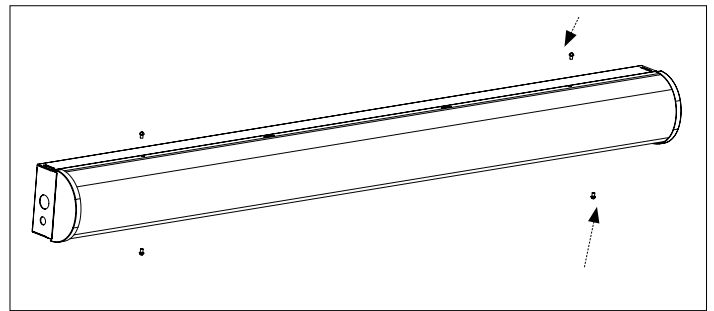
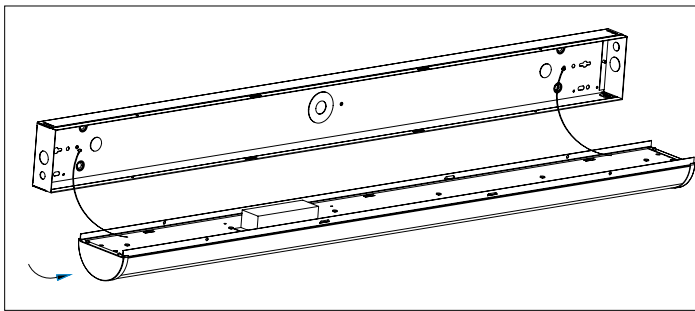
#### Options

Emergency Backup <sup>1</sup>	Controls	Designation
EM1800 1800lm EMLC/DR Emergency Lighting Control Dimming Relay	See Pg. 4 for details on sensors and controls.	BAA Buy American Act Compliant  BABAA Build America, Buy America Act Compliant

Specifications and Dimensions subject to change without notice.



### MOUNTING INFORMATION



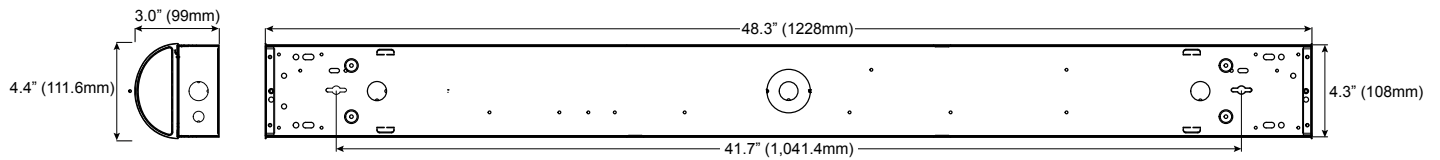
### PERFORMANCE SUMMARY

<b>Input Voltage</b>	120V-277V	<b>Rated Life</b>	75,000 hours
<b>Input Frequency</b>	50/60 Hz	<b>L703</b>	54,000 hours
<b>Rated Wattage</b>	See Performance Table	<b>Power Factor</b>	> 0.9
<b>Delivered Lumens</b>	See Performance Table	<b>THD</b>	< 20%
<b>Efficacy</b>	> 120 LPW (typ.)	<b>Dimming</b>	0-10V Continuous (10-100%)
<b>CRI</b>	80+	<b>Operating Temp.</b>	-20°C to 50°C
<b>Available CCT</b>	3500K, 4000K, 5000K	<b>Occupancy Sensor Type</b>	High Frequency (Microwave), Multi-Level
<b>Color Consistency2</b>	5-step MacAdam Ellipse		

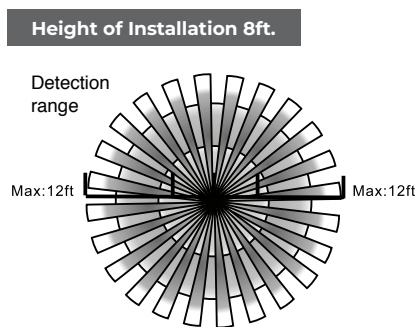
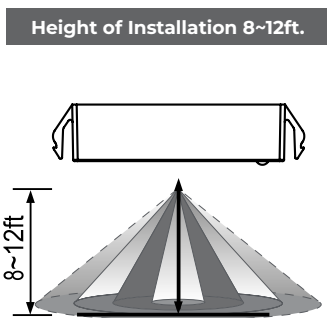
<sup>1</sup> IMPORTANT: THE BATTERY MUST BE RECHARGED EVERY THREE (3) MONTHS. IF NOT RECHARGED ACCORDINGLY, BATTERY MAY FAIL AND VOID WARRANTY  
**Specifications and Dimensions subject to change without notice.**

**PERFORMANCE DATA**

4'	Catalog No.	Rated Wattage (W)	3500K		4000K		5000K	
			Delivered Lumens (lm)	Efficacy (lm/W)	Delivered Lumens (lm)	Efficacy (lm/W)	Delivered Lumens (lm)	Efficacy (lm/W)
4'	STL-4UXH/8CT XE G4-OSDL/HF (DC)	25	3,475	139	3,850	154	3,575	143
		34	4590	135	5,100	150	4,726	139
		40	5,280	132	5,880	147	5,440	136

**PRODUCT DIMENSIONS**

**SENSOR SPECIFICATIONS**

<b>Sensor Type</b>	High-frequency Microwave	<b>Detection Radius/Angle</b>	Max 12ft. (4m) / 360°
<b>Input Voltage</b>	10-14V DC, >50mA	<b>Mounting Height</b>	Max 12ft. (4m)
<b>Microwave High Frequency</b>	5.8GHz±75MHz	<b>Remote Range</b>	50ft. (15m) indoor, no backlight
<b>Transmitting Power</b>	<0.2mW	<b>Humidity</b>	Max. 95% RH
<b>Dim Control Output</b>	0-10V, max. 25mA sinking current	<b>Temperature</b>	-40°F ~ +158°F (-40°C ~ +70°C)



Specifications and Dimensions subject to change without notice.

## SENSOR SETTINGS

**Model RC100**

Sensor Remote Programmer (sold separately)

<b>Use with Sensor</b>	SHF-OSDL/IR-PP3-DC-320
<b>Upload Range</b>	Up to 50ft. (15m)
<b>Operating Temp.</b>	32°F ~ 122°F (0°C ~ 50°C)
<b>Power Supply</b>	2 x AAA 1.5V batteries, Alkaline preferred (Included)
<b>Dimensions</b>	4.84" x 2.76" x 0.8" (123 x 70 x 20.3mm)

**LED Indicators**

LED	DEFAULT SETTING
BRIGHTNESS	100%
SENSITIVITY	100%
HOLD TIME	5 min
DAYLIGHT SENSOR	Disabled
STAND-BY DIM	30%
STAND-BY TIME	60 min

## PRODUCT OPTIONS

### BLUETOOTH® SENSOR OPTION

Catalog No.	Description	Ordering	Shipping	Remote Control	Sensor Mounting
SHF-OSDL/BT-PP3-DC-312	AleoBlue, Wireless Bluetooth® High Frequency Occ Sensor w/ Daylight Harvesting, 12V DC input, snap-in with quick connector	Order Separately	Field Install	AleoBlue App	Snap in Gear Tray / Behind Lens

NOTE: Comes standard with basic sensor factory installed. If needed, a Bluetooth® wireless networked sensor can be installed (must disconnect basic sensor before installing AleoBlue sensor)



SHF-OSDL/BT-PP3-DC-312

### WIRE GUARD OPTIONS

Catalog No.	Description	Ordering	Shipping
-STL-WG-4	Wire Guard for Stairwell Strip STL 4'	Order and Ship Separately	Field Install

